



# Ranger-Wyoming Exploration Results

Located in the prolific Silver Valley, Idaho.  
A Brownfields exploration opportunity.

TSX.V SILV | OTCQB SVMFF  
[SILVERVALLEYMETALS.COM](http://SILVERVALLEYMETALS.COM)

# Forward Looking Statements

Certain statements in this presentation are forward-looking and involve a number of risks and uncertainties. Such forward looking statements are within the meaning of that term in Section 27A of the Securities Act of 1933, as amended, and Section 21E of the Securities Exchange Act of 1934, as amended, as well as within the meaning of the phrase ‘forward-looking information’ in the Canadian Securities Administrators’ National Instrument 51-102 – Continuous Disclosure Obligations. Forward-looking statements are not comprised of historical facts. Forward-looking statements include estimates and statements that describe the Company’s future plans, objectives or goals, including words to the effect that the Company or management expects a stated condition or result to occur. Forward-looking statements may be identified by such terms as “believes”, “anticipates”, “expects”, “estimates”, “may”, “could”, “would”, “will”, or “plan”. Since forward-looking statements are based on assumptions and address future events and conditions, by their very nature they involve inherent risks and uncertainties. Although these statements are based on information currently available to the Company, the Company provides no assurance that actual results will meet management’s expectations. Risks, uncertainties and other factors involved with forward-looking information could cause actual events, results, performance, prospects and opportunities to differ materially from those expressed or implied by such forward-looking information. Forward looking information in this presentation includes, the Company’s intentions regarding its objectives, goals or future plans and statements. Factors that could cause actual results to differ materially from such forward-looking information include, but are not limited to: the ability to predict and counteract the effects of COVID-19 on the business of the Company, including but not limited to the effects of COVID-19 on the price of commodities, capital market conditions, restriction on labour and international travel and supply chains; failure to identify mineral resources; failure to convert estimated mineral resources to reserves; the inability to complete a feasibility study which recommends a production decision; the preliminary nature of metallurgical test results; delays in obtaining or failures to obtain required governmental, environmental or other project approvals; political risks; changes in equity markets; uncertainties relating to the availability and costs of financing needed in the future; the inability of the Company to budget and manage its liquidity in light of the failure to obtain additional financing, including the ability of the Company to complete the payments pursuant to the terms of the option agreement to acquire 100% of the Ranger-Page Project; inflation; changes in exchange rates; fluctuations in commodity prices; delays in the development of projects; capital, operating and reclamation costs varying significantly from estimates and the other risks involved in the mineral exploration and development industry; and those risks set out in the Company’s public documents filed on SEDAR. Although the Company believes that the assumptions and factors used in preparing the forward-looking information in this presentation are reasonable, undue reliance should not be placed on such information, which only applies as of the date of this presentation, and no assurance can be given that such events will occur in the disclosed time frames or at all. The Company disclaims any intention or obligation to update or revise any forward-looking information, whether as a result of new information, future events or otherwise, other than as required by law. No stock exchange, securities commission or other regulatory authority has approved or disapproved of the information contained herein.

## Qualified Person


Timothy Mosey, B.Sc., M.Sc., SME is a Qualified Person as defined by NI 43-101 and has reviewed and approved the technical data and information contained in this presentation.




SIGNIFICANTLY INCREASING THE POTENTIAL MINERAL ENDOWMENT OF THE PROJECT

# New Drill Target Areas - 2023


## LEGEND




Stops




Underground Workings



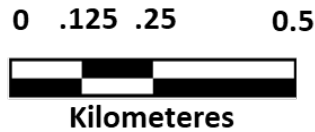
1. Osburn	5. Buckeye
2. Crown Point	6. Spring
3. Curlew	7. Government Gulch
4. 96 Fault	8. Page



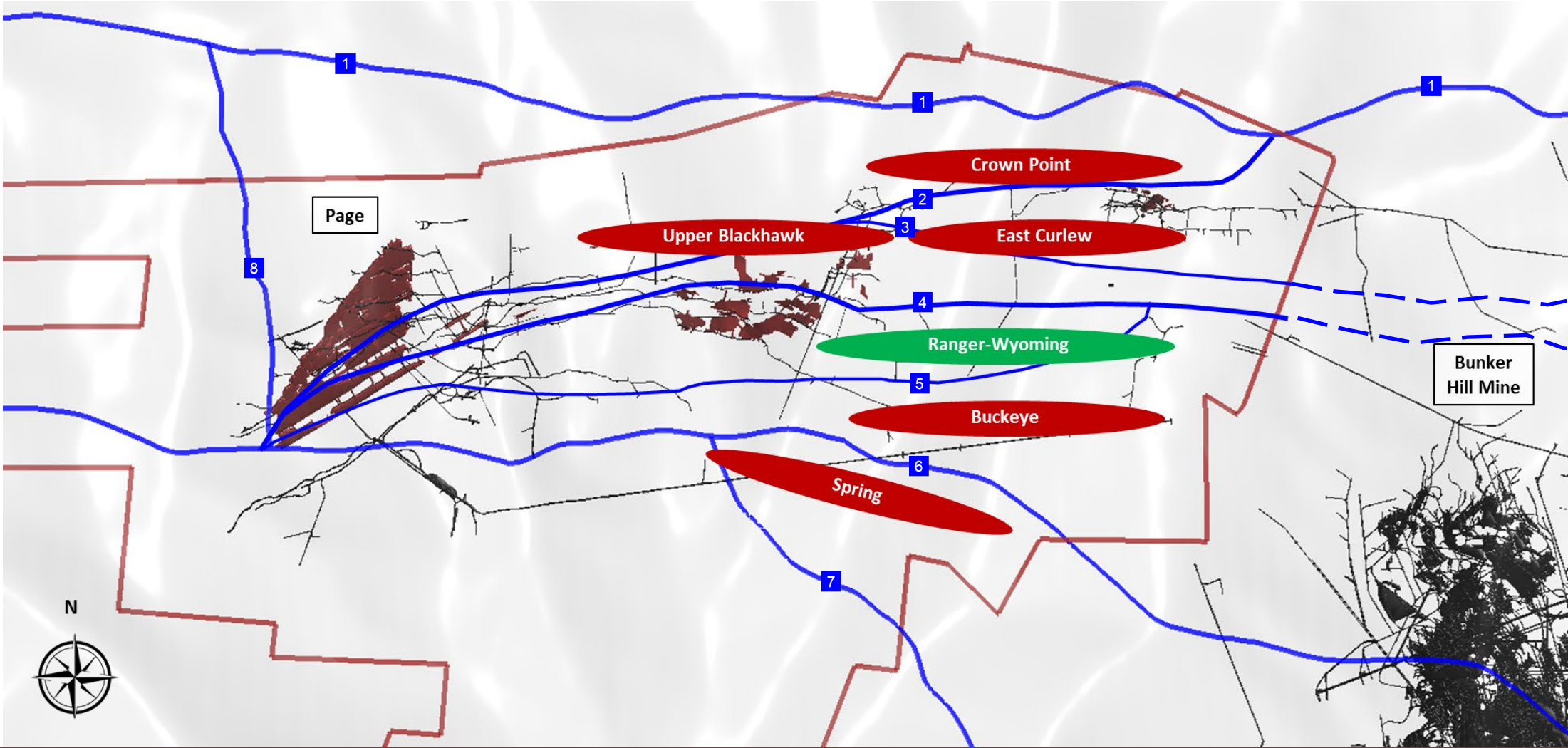
Property Boundary



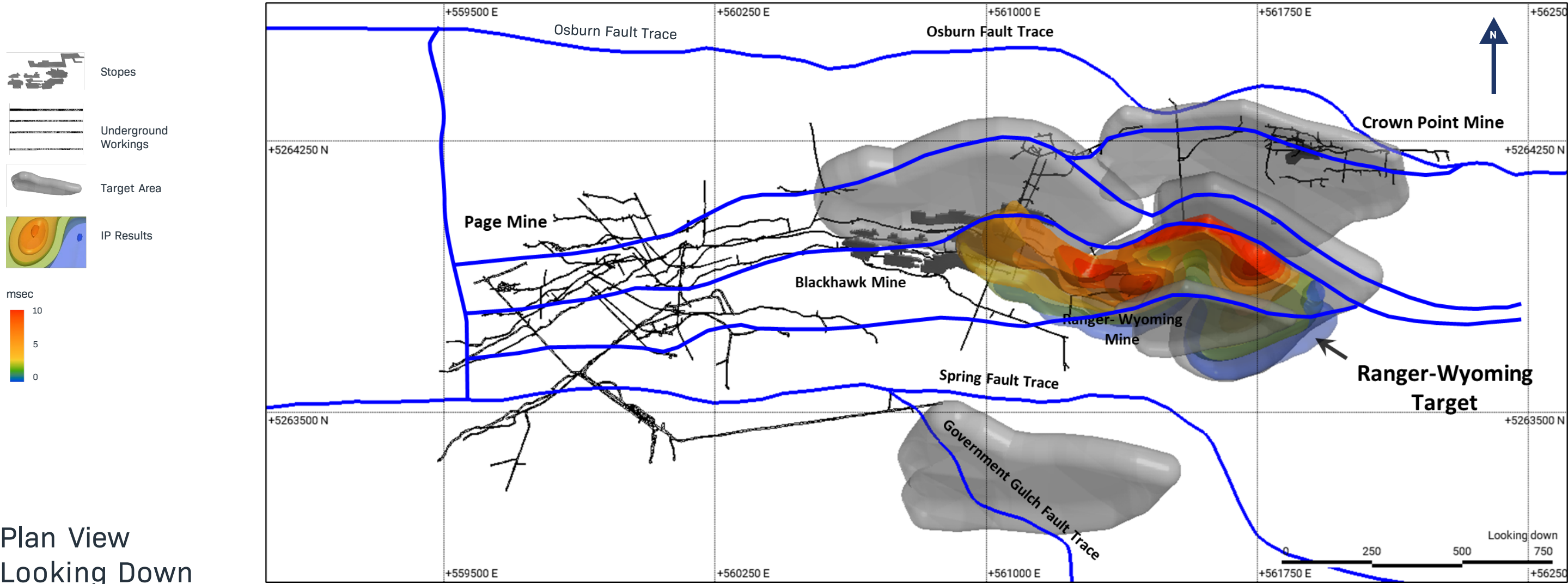
Bunker Hill Mine



Plan View



# Ranger-Wyoming Target Area

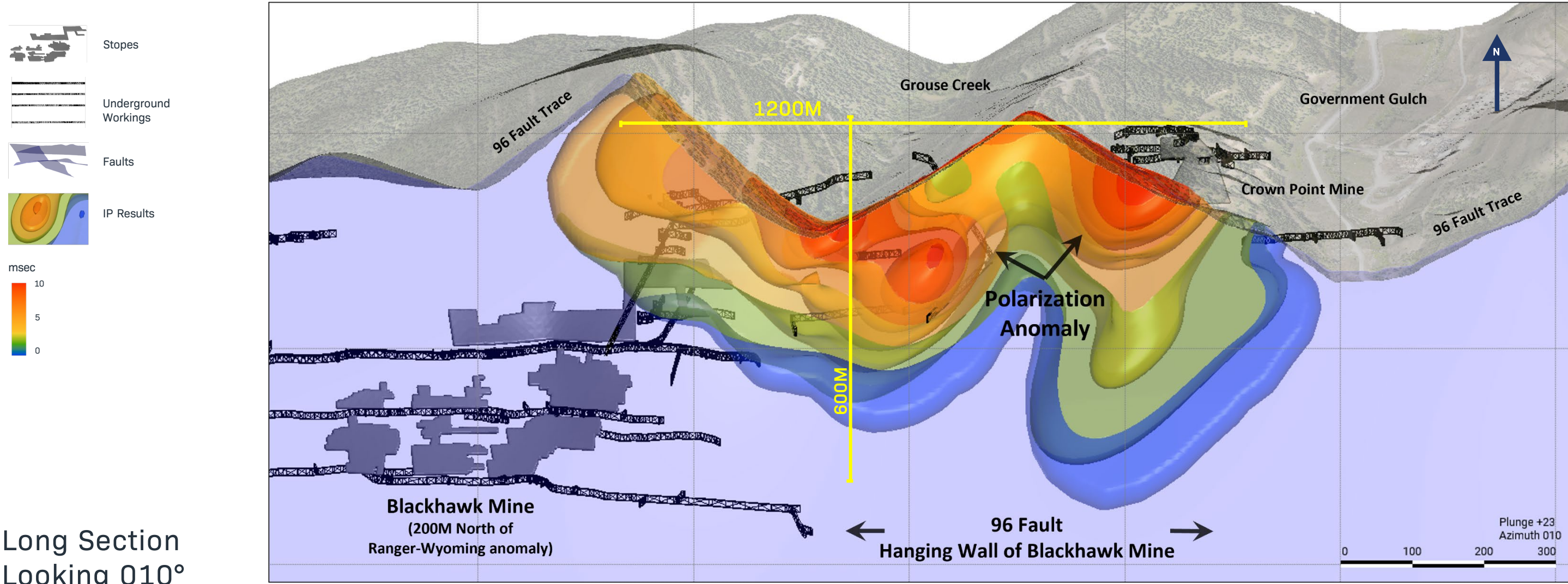


Plan View  
Looking Down



450 METRE STRIKE LENGTH AT SURFACE ANOMALY STRONGLY COINCIDENT WITH RESISTIVITY

# Geophysics: Induced Polarization Anomaly

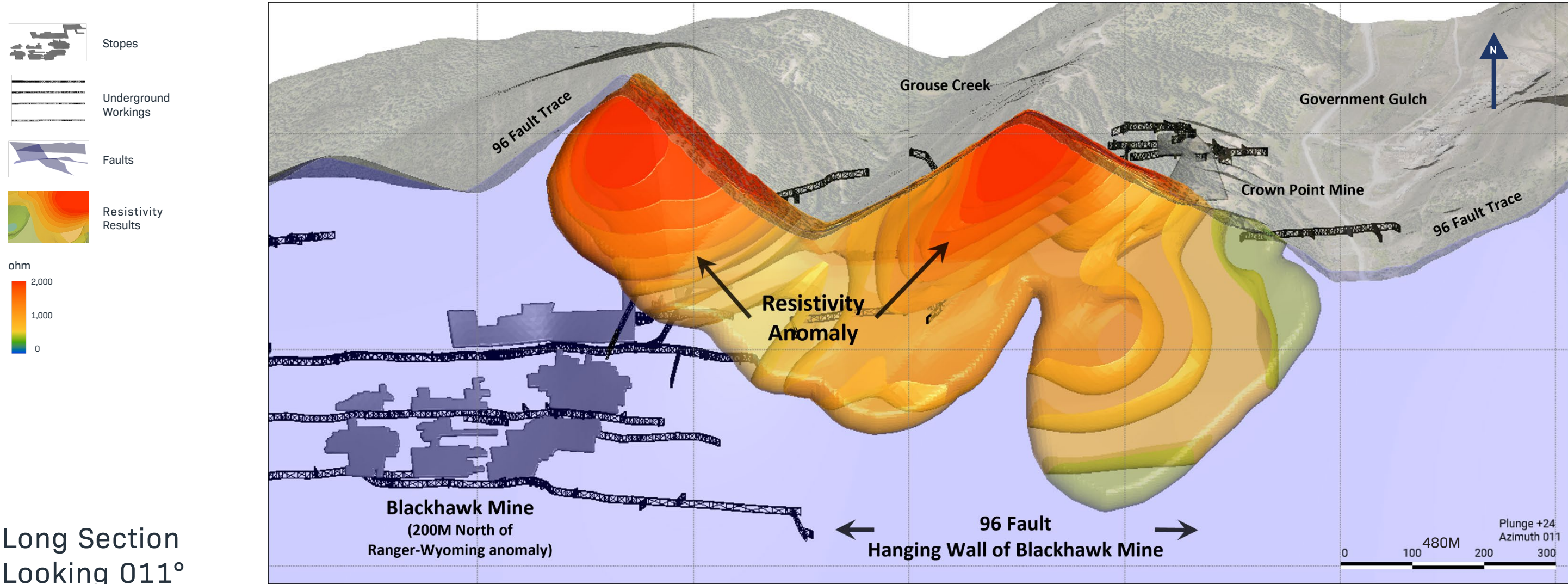


Long Section  
Looking 010°



STRONGLY SILICIFIED, EXCELLENT INDICATOR OF A MINERALIZED SYSTEM

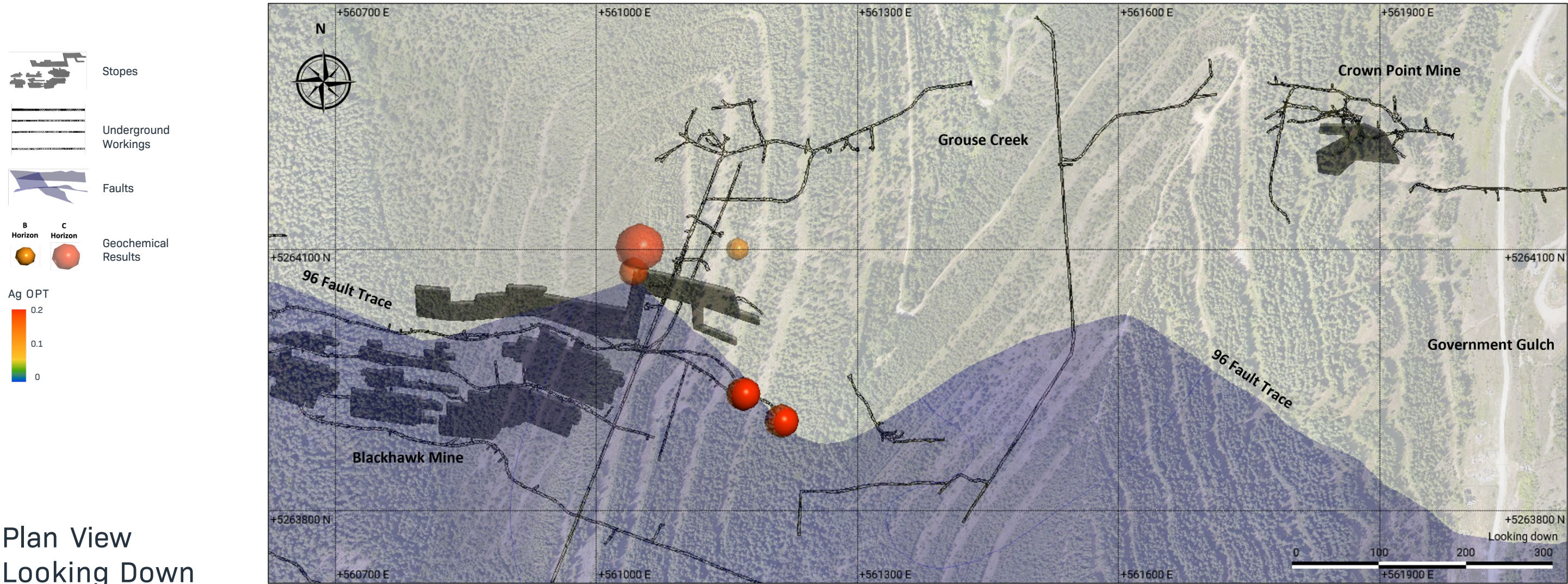
# Geophysics: Resistivity Anomaly



Long Section  
Looking 011°



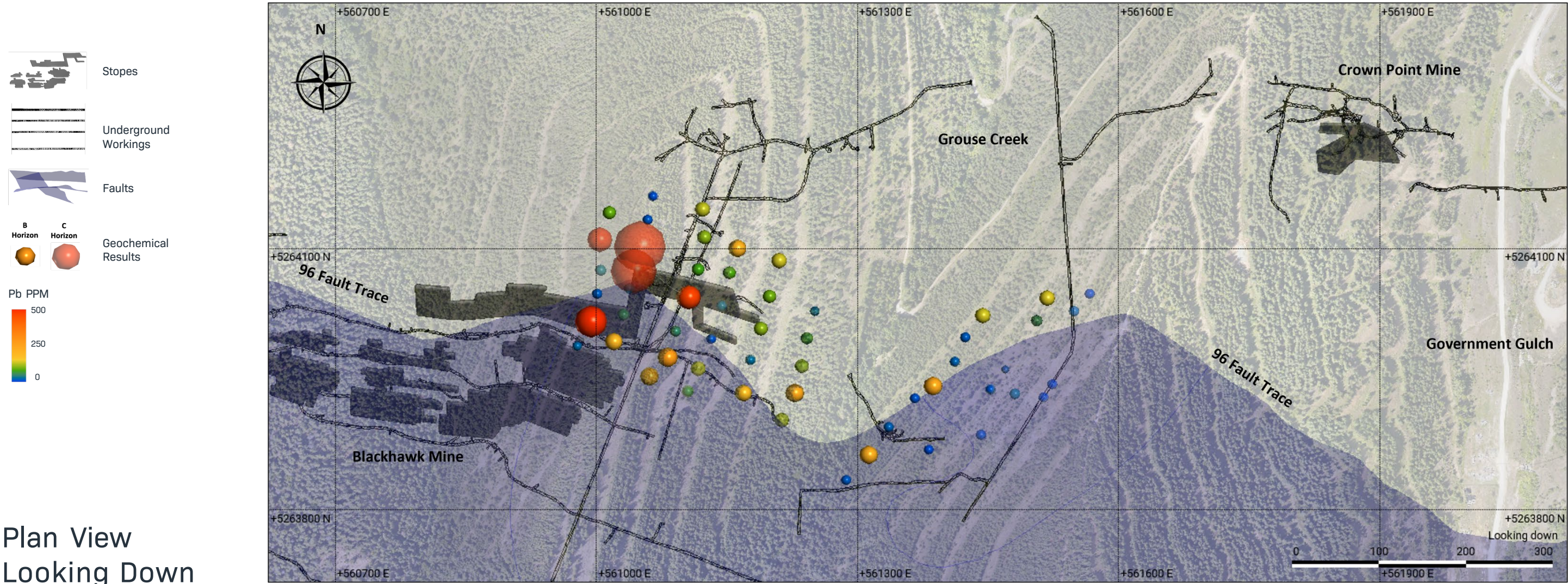
# Geochemical Survey: Silver



Plan View  
Looking Down



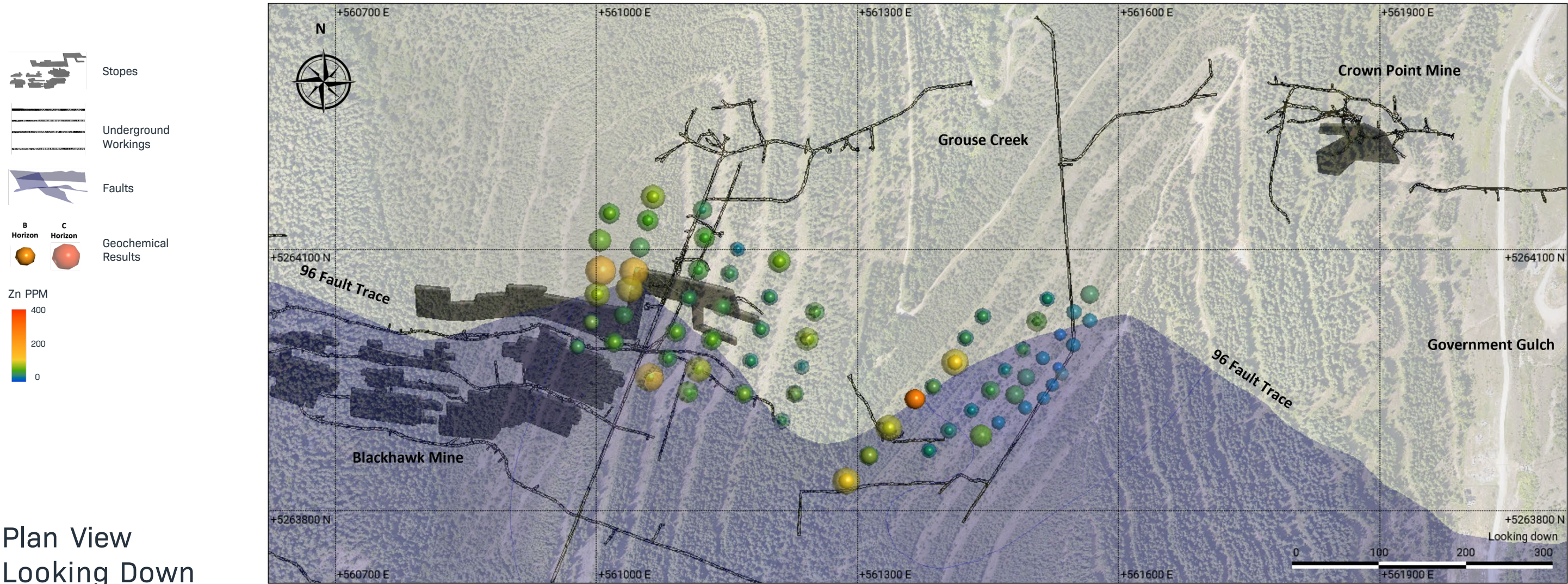
# Geochemical Survey: Lead



Plan View  
Looking Down



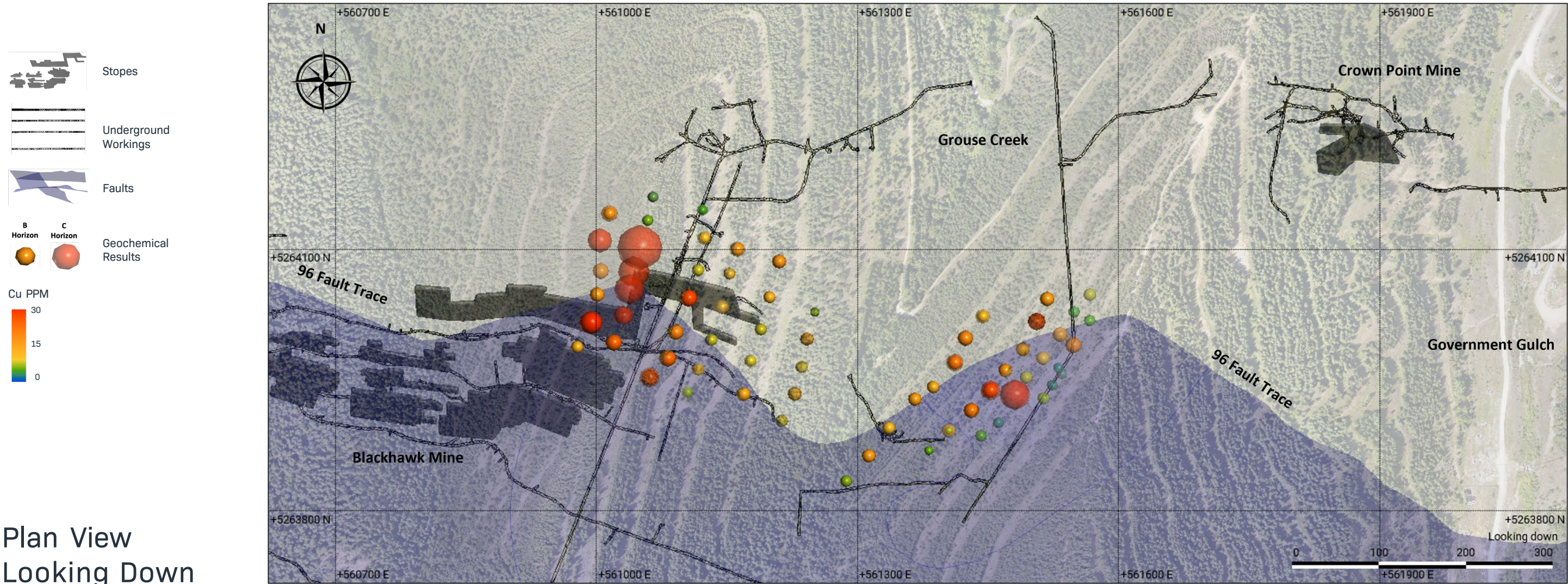
# Geochemical Survey: Zinc



Plan View  
Looking Down



# Geochemical Survey: Copper

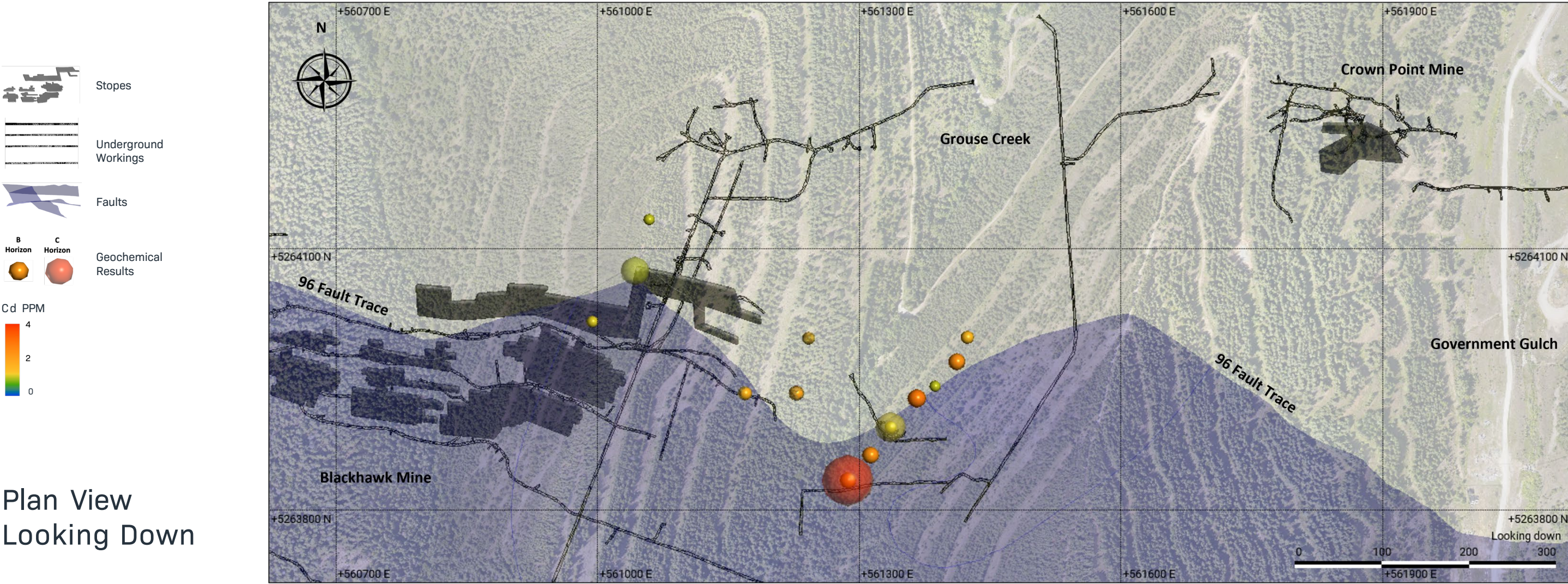


Plan View  
Looking Down



# Geochemical Survey: Cadmium

- A strong indicator of sphalerite / zinc

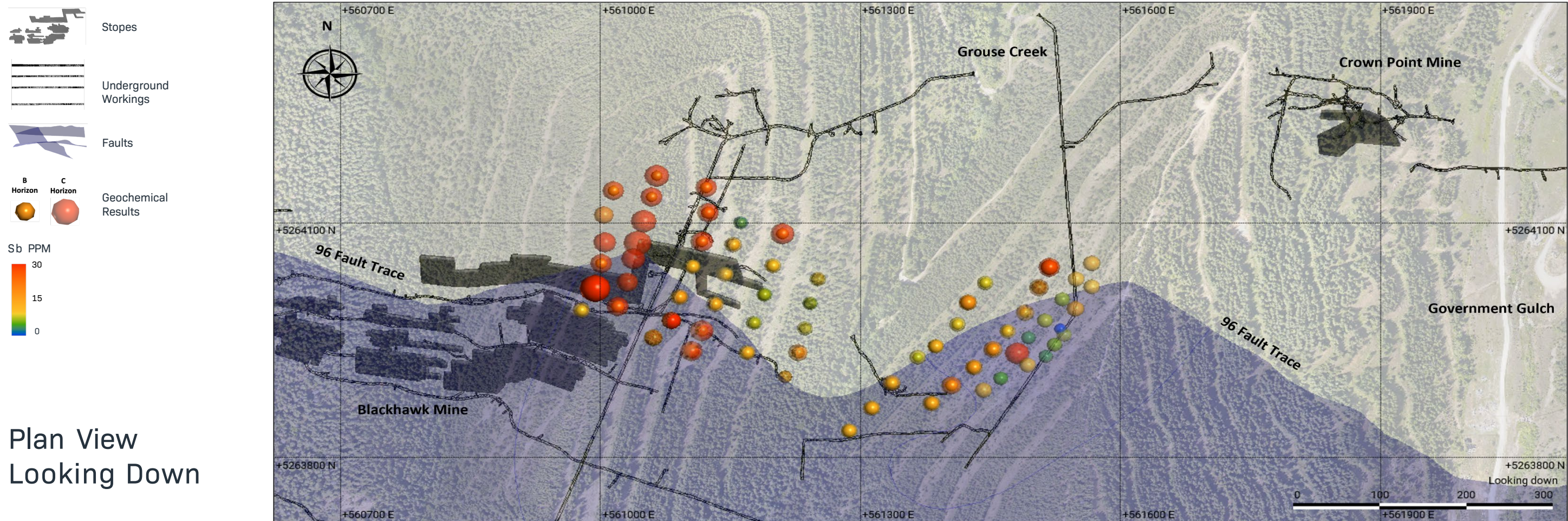


Plan View  
Looking Down



# Geochemical Survey: Antimony

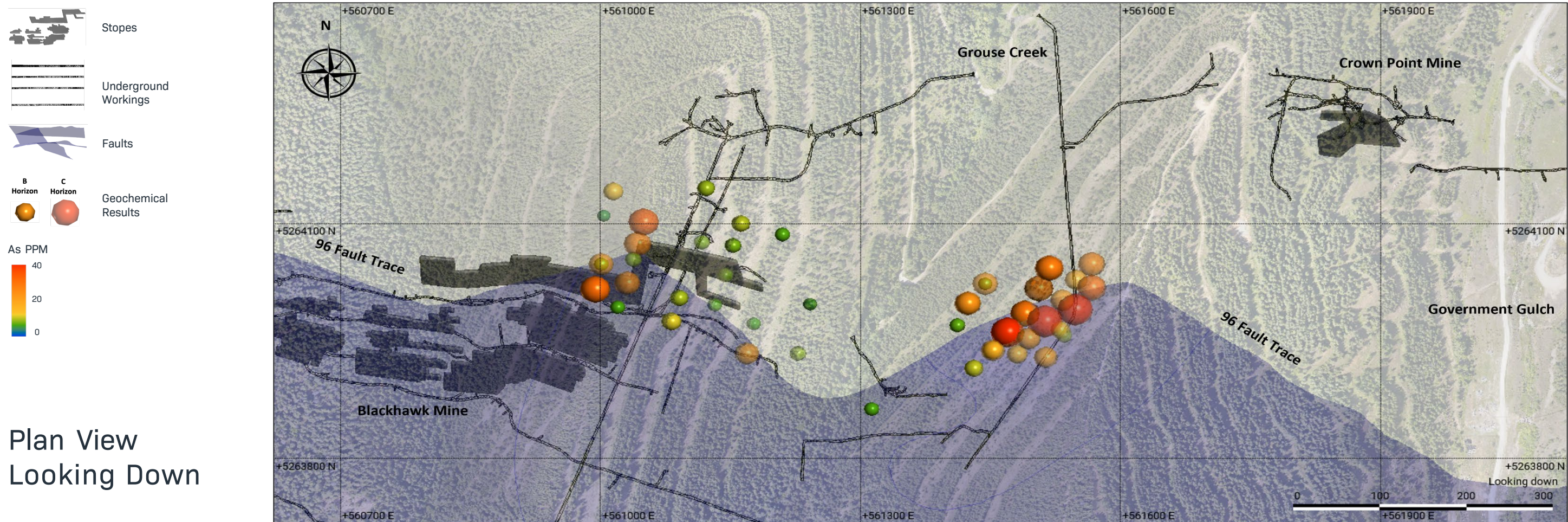
- A strong indicator of boulangerite, a lead sulphide, present in veins located in our area of the district
- An indicator of tetrahedrite, a rich silver bearing mineral in the district





# Geochemical Survey: Arsenic

- A strong indicator of arsenopyrite, a gangue mineral common in veins located in west end of the Silver Valley, Coeur d'Alene District
- An indicator of tetrahedrite, a rich silver bearing mineral in the district





# Geochemical Results

- Multi-element geochemical signatures consistent over both Induced Polarization and Resistivity anomalies

## B-Horizon Geochemical Results:

Sample ID	LDL			<5 ppm	<1 ppm	<2 ppm	<5 ppm	<5 ppm	<2 ppm	<3.4 ppm
	Easting	Northing	Elevation (m)	As (ppm)	Cd (ppm)	Cu (ppm)	Pb (ppm)	Sb (ppm)	Zn (ppm)	Ag (g/t)
GCE-2-2B	561287	5263834	889	Trace	2.2	10.8	24.6	19.5	144.0	Trace
GCE-2-3B	561313	5263863	890	6.8	2.4	16.1	219.0	19.8	169.0	Trace
GCE-2-4B	561336	5263895	888	Trace	1.2	11.8	27.2	17.1	100.0	Trace
GCE-2-5B	561366	5263928	887	Trace	2.8	15.8	24.1	14.4	274.0	Trace
GCE-2-6B	561387	5263942	885	Trace	1.1	13.2	232.0	21.0	106.0	Trace
GCE-2-7B	561412	5263970	883	7.4	2.4	17.2	24.0	16.3	144.0	Trace
GCE-2-8B	561424	5263998	884	19.4	1.5	19.0	33.2	23.0	86.6	Trace
GCE-2-9B	561444	5264023	883	6.2	Trace	9.2	140.0	16.0	74.6	Trace
GCE-3-4B	561518	5264043	917	23.9	Trace	17.1	145.0	26.4	65.2	Trace
GCE-3-10B	561506	5264017	894	28.6	Trace	28.5	57.5	21.4	54.1	Trace
GCE-3-11B	561490	5263985	909	29.3	Trace	16.7	Trace	16.0	62.7	Trace
GCE-3-12B	561470	5263961	912	43.5	Trace	17.4	7.2	17.3	41.8	Trace
GCE-3-13B	561453	5263938	916	12.8	Trace	21.1	15.9	19.6	53.4	Trace
GCE-3-14B	561431	5263915	915	10.6	Trace	21.5	Trace	21.6	41.0	Trace
GCE-3-15B	561405	5263892	919	Trace	Trace	4.4	Trace	17.7	45.0	Trace
GCE-3-16B	561382	5263869	918	Trace	Trace	5.7	15.3	20.1	64.3	Trace
GCW-1-7B	561251	5264028	895	Trace	Trace	6.7	31.1	18.8	87.8	Trace
GCW-1-8B	561242	5263997	893	6.1	1.4	15.6	72.8	17.7	114.0	Trace
GCW-1-9B	561236	5263965	894	Trace	Trace	11.4	107.0	16.8	33.8	Trace
GCW-1-10B	561228	5263934	896	Trace	1.9	16.7	231.0	18.7	127.0	Trace
GCW-1-11B	561213	5263903	897	Trace	Trace	12.3	125.0	19.9	59.9	9.5



# Geochemical Results

- Multi-element geochemical signatures consistent over both Induced Polarization and Resistivity anomalies

## B-Horizon Geochemical Results:

	LDL			<5 ppm	<1 ppm	<2 ppm	<5 ppm	<5 ppm	<2 ppm	<3.4 ppm
Sample ID	Easting	Northing	Elevation (m)	As (ppm)	Cd (ppm)	Cu (ppm)	Pb (ppm)	Sb (ppm)	Zn (ppm)	Ag (g/t)
GCW-2-1B	561169	5263934	938	Trace	1.6	16.6	177.0	19.2	114.0	9.3
GCW-2-2B	561177	5263972	941	Trace	Trace	9.0	23.5	17.5	71.2	Trace
GCW-2-3B	561189	5264008	946	Trace	Trace	10.7	110.0	17.6	69.9	Trace
GCW-2-4B	561199	5264045	950	Trace	Trace	12.2	97.0	18.0	79.8	Trace
GCW-2-5B	561210	5264086	950	7.0	Trace	17.2	140.0	17.7	96.5	Trace
GCW-3-5B	561162	5264100	979	10.1	Trace	14.4	205.0	15.4	38.9	Trace
GCW-3-6B	561153	5264072	977	8.1	Trace	11.8	84.4	18.8	63.4	Trace
GCW-3-7B	561144	5264034	972	Trace	Trace	8.6	42.0	17.1	56.2	Trace
GCW-3-8B	561132	5263996	976	Trace	Trace	11.4	28.2	18.6	90.4	Trace
GCW-3-9B	561117	5263962	974	Trace	Trace	11.8	127.0	18.1	55.4	Trace
GCW-3-10B	561105	5263936	970	Trace	Trace	5.5	31.8	24.1	45.1	Trace
GCW-4-2B	561061	5263953	1001	Trace	Trace	23.5	222.0	27.0	48.4	Trace
GCW-4-3B	561082	5263975	1004	11.6	Trace	25.4	269.0	31.6	71.1	Trace
GCW-4-4B	561091	5264005	1007	9.7	Trace	22.2	51.0	20.9	97.4	Trace
GCW-4-5B	561106	5264044	1008	Trace	Trace	27.9	472.0	19.1	68.2	Trace
GCW-4-6B	561117	5264076	1010	Trace	Trace	9.7	79.7	17.8	51.8	Trace
GCW-4-7B	561124	5264113	1010	Trace	Trace	9.6	110.0	19.0	58.2	Trace
GCW-4-8B	561122	5264145	1014	9.3	Trace	5.9	133.0	17.8	30.1	Trace
GCW-5-3B	561065	5264160	1049	Trace	Trace	8.1	12.5	15.5	94.9	Trace
GCW-5-4B	561059	5264133	1057	Trace	1.1	8.6	32.6	15.9	69.8	Trace
GCW-5-9B	561020	5263993	1053	6.7	Trace	24.4	192.0	19.1	95.2	Trace
GCW-6-1B	560978	5263988	1042	Trace	Trace	12.9	26.2	16.0	107.0	Trace
GCW-6-2B	560994	5264016	1039	31.0	1.2	52.3	1050.0	83.4	124.0	Trace
GCW-6-3B	561001	5264048	1036	6.6	Trace	17.7	31.4	16.3	87.5	Trace
GCW-6-6B	561015	5264141	1036	Trace	Trace	12.3	92.9	16.0	102.0	Trace



# Geochemical Results

- Multi-element geochemical signatures consistent over both Induced Polarization and Resistivity anomalies

## C-Horizon Geochemical Results:

	LDL			<5 ppm	<1 ppm	<2 ppm	<5 ppm	<5 ppm	<2 ppm	<3.4 ppm
Sample ID	Easting	Northing	Elevation (m)	As (ppm)	Cd (ppm)	Cu (ppm)	Pb (ppm)	Sb (ppm)	Zn (ppm)	Ag (g/t)
GCE-2-2C	561287	5263834	889	Trace	4.6	5.0	12.6	16.8	116.0	Trace
GCE-2-3C	561313	5263863	890	Trace	Trace	4.8	7.5	17.8	51.0	Trace
GCE-2-4C	561336	5263895	888	Trace	1.2	10.6	17.7	19.5	105.0	Trace
GCE-2-5C	561366	5263928	887	Trace	Trace	7.0	8.7	15.9	33.3	Trace
GCE-2-6C	561387	5263942	885	Trace	Trace	5.7	11.9	16.5	36.3	Trace
GCE-2-7C	561412	5263970	883	7.7	Trace	24.4	21.1	16.0	115.0	Trace
GCE-2-8C	561424	5263998	884	25.9	Trace	18.5	9.7	20.5	32.0	Trace
GCE-2-9C	561444	5264023	883	22.6	Trace	13.2	33.4	15.7	33.8	Trace
GCE-3-4C	561518	5264043	917	31.4	Trace	14.8	75.8	29.1	25.9	Trace
GCE-3-10C	561506	5264017	894	24.8	Trace	10.8	6.3	23.5	56.7	Trace
GCE-3-11C	561490	5263985	909	19.6	Trace	9.2	Trace	20.9	30.6	Trace
GCE-3-12C	561470	5263961	912	11.2	Trace	4.5	Trace	16.5	27.3	Trace
GCE-3-13C	561453	5263938	916	20.2	Trace	34.5	13.9	22.6	47.8	Trace
GCE-3-14C	561431	5263915	915	7.8	Trace	9.9	Trace	19.9	26.8	Trace
GCE-3-15C	561405	5263892	919	Trace	Trace	12.5	Trace	25.2	33.4	Trace
GCE-3-16C	561382	5263869	918	Trace	Trace	Trace	7.6	18.9	25.8	Trace
GCE-4-8C	561567	5264048	937	26.7	Trace	7.8	5.3	18.4	44.4	Trace
GCE-4-9C	561549	5264028	938	17.3	Trace	4.4	19.2	17.2	28.4	Trace
GCE-4-10C	561533	5264002	940	20.4	Trace	15.8	Trace	14.5	14.2	Trace
GCE-4-11C	561513	5263975	944	54.8	Trace	10.6	Trace	15.0	21.5	Trace
GCE-4-12C	561494	5263953	942	20.2	Trace	8.3	Trace	12.4	39.6	Trace
GCE-4-13C	561481	5263933	941	14.3	Trace	104.0	26.0	39.2	49.3	Trace
GCE-4-14C	561462	5263901	944	Trace	Trace	2.9	Trace	13.1	20.5	Trace
GCE-4-15C	561442	5263886	940	Trace	Trace	5.0	7.8	17.3	70.6	Trace
GCE-5-2R	561493	5263918	951	Trace	Trace	Trace	Trace	16.9	22.3	Trace
GCE-5-3R	561514	5263929	959	19	Trace	6.7	6.6	12.4	20.0	Trace
GCE-5-4R	561524	5263944	960	Trace	Trace	3.0	6.0	14.0	18.3	Trace
GCE-5-5R	561535	5263957	946	8.1	Trace	2.5	Trace	14.4	20.5	Trace
GCE-5-6R	561531	5263964	948	13.0	Trace	2.5	Trace	9.4	11.8	Trace
GCE-5-7R	561548	5263990	958	53.2	Trace	19.6	Trace	19.3	22.6	Trace
GCE-5-8R	561567	5264018	950	31.5	Trace	4.8	Trace	16.7	25.5	Trace
GCW-1-7C	561251	5264028	895	Trace	Trace	Trace	Trace	16.0	51.3	Trace



# Geochemical Results

- Multi-element geochemical signatures consistent over both Induced Polarization and Resistivity anomalies

**C-Horizon Geochemical Results:**

LDL				<5 ppm	2.47	<2 ppm	<5 ppm	<5 ppm	<2 ppm	<3.4 ppm
Sample ID	Easting	Northing	Elevation (m)	As (ppm)	Cd (ppm)	Cu (ppm)	Pb (ppm)	Sb (ppm)	Zn (ppm)	Ag (g/t)
GCW-1-8C	561242	5263997	893	Trace	Trace	8.9	Trace	13.9	80.2	Trace
GCW-1-9C	561236	5263965	894	Trace	Trace	8.5	122.0	15.2	27.6	Trace
GCW-1-10C	561228	5263934	896	8.68	Trace	12.3	57.4	23.4	41.7	Trace
GCW-1-11C	561213	5263903	897	Trace	Trace	8.3	17.3	11.0	34.0	Trace
GCW-2-1C	561169	5263934	938	21.0	Trace	13.1	13.2	17.6	51.6	Trace
GCW-2-2C	561177	5263972	941	6.2	Trace	8.5	35.2	14.6	30.6	Trace
GCW-2-3C	561189	5264008	946	Trace	Trace	7.2	Trace	14.1	38.9	Trace
GCW-2-4C	561199	5264045	950	Trace	Trace	5.0	23.1	16.5	33.7	Trace
GCW-2-5C	561210	5264086	950	Trace	Trace	6.6	11.0	37.2	72.9	Trace
GCW-3-5C	561162	5264100	979	8.68	Trace	16.8	303.0	12.0	25.2	4.1
GCW-3-6C	561153	5264072	977	7.4	Trace	5.5	9.1	18.4	40.2	Trace
GCW-3-7C	561144	5264034	972	8.0	Trace	14.3	24.5	17.4	50.8	Trace
GCW-3-8C	561132	5263996	976	6.7	Trace	7.5	5.1	18.8	60.8	Trace
GCW-3-9C	561117	5263962	974	Trace	Trace	3.2	6.7	36.5	100.0	Trace
GCW-3-10C	561105	5263936	970	Trace	Trace	6.9	83.1	33.1	62.9	Trace
GCW-4-2C	561061	5263953	1001	Trace	Trace	34.9	86.0	22.1	132.0	Trace
GCW-4-3C	561082	5263975	1004	13.0	Trace	23.1	69.2	16.7	45.6	Trace
GCW-4-4C	561091	5264005	1007	10.3	Trace	18.4	10.2	19.9	55.1	Trace
GCW-4-5C	561106	5264044	1008	Trace	Trace	8.5	40.4	16.8	39.8	Trace
GCW-4-6C	561117	5264076	1010	8.2	Trace	7.8	81.4	33.6	57.4	Trace
GCW-4-7C	561124	5264113	1010	Trace	Trace	11.6	74.7	30.1	61.0	Trace
GCW-4-8C	561122	5264145	1014	Trace	Trace	4.3	55.5	29.6	49.8	Trace
GCW-5-3C	561065	5264160	1049	Trace	Trace	2.9	12.5	40.3	86.9	Trace
GCW-5-4C	561059	5264133	1057	Trace	Trace	4.9	7.9	30.3	62.6	Trace
GCW-5-5R	561050	5264102	1058	35.0	Trace	339.0	7640.0	42.9	52.8	21.9
GCW-5-6R	561043	5264074	1055	27.2	1	113.0	4950.0	53.4	134.0	6.2
GCW-5-7R	561038	5264054	1059	8.8	Trace	102.0	27.9	37.2	115.0	Trace
GCW-5-8R	561031	5264024	1057	23.7	Trace	32.0	59.1	29.3	50.1	Trace
GCW-5-9C	561020	5263993	1053	Trace	Trace	7.9	9.1	30.4	53.9	Trace
GCW-6-1C	560978	5263988	1042	Trace	Trace	2.0	Trace	17.5	29.6	Trace
GCW-6-2C	560994	5264016	1039	5.2	Trace	17.9	69.3	30.7	38.2	Trace
GCW-6-3C	561001	5264048	1036	21.5	Trace	14.4	11.7	29.3	93.9	Trace
GCW-6-4R	561005	5264075	1035	Trace	Trace	18.9	41.5	32.6	155.0	Trace
GCW-6-5R	561004	5264110	1033	5.2	Trace	58.6	856.0	23.4	71.7	Trace
GCW-6-6C	561015	5264141	1036	13.2	Trace	20.1	11.4	28.5	59.8	Trace



# CONTACT US



**SILVER VALLEY  
METALS**

**BRANDON ROOK**

**PRESIDENT & CEO**

**E: [info@silvervalleymetals.com](mailto:info@silvervalleymetals.com)**

**M: 604-800-4710**

**HEAD OFFICE**

**750 - 1095 WEST PENDER STREET**

**VANCOUVER, B.C. V6E 2M6**