



Spring Target Exploration Results

Located in the prolific Silver Valley, Idaho.
A Brownfields exploration opportunity.

TSX.V SILV | QTCQB SVMFF
SILVERVALLEYMETALS.COM

Forward Looking Statements

Certain statements in this presentation are forward-looking and involve a number of risks and uncertainties. Such forward looking statements are within the meaning of that term in Section 27A of the Securities Act of 1933, as amended, and Section 21E of the Securities Exchange Act of 1934, as amended, as well as within the meaning of the phrase ‘forward-looking information’ in the Canadian Securities Administrators’ National Instrument 51-102 – Continuous Disclosure Obligations. Forward-looking statements are not comprised of historical facts. Forward-looking statements include estimates and statements that describe the Company’s future plans, objectives or goals, including words to the effect that the Company or management expects a stated condition or result to occur. Forward-looking statements may be identified by such terms as “believes”, “anticipates”, “expects”, “estimates”, “may”, “could”, “would”, “will”, or “plan”. Since forward-looking statements are based on assumptions and address future events and conditions, by their very nature they involve inherent risks and uncertainties. Although these statements are based on information currently available to the Company, the Company provides no assurance that actual results will meet management’s expectations. Risks, uncertainties and other factors involved with forward-looking information could cause actual events, results, performance, prospects and opportunities to differ materially from those expressed or implied by such forward-looking information. Forward looking information in this presentation includes, the Company’s intentions regarding its objectives, goals or future plans and statements. Factors that could cause actual results to differ materially from such forward-looking information include, but are not limited to: the ability to predict and counteract the effects of COVID-19 on the business of the Company, including but not limited to the effects of COVID-19 on the price of commodities, capital market conditions, restriction on labour and international travel and supply chains; failure to identify mineral resources; failure to convert estimated mineral resources to reserves; the inability to complete a feasibility study which recommends a production decision; the preliminary nature of metallurgical test results; delays in obtaining or failures to obtain required governmental, environmental or other project approvals; political risks; changes in equity markets; uncertainties relating to the availability and costs of financing needed in the future; the inability of the Company to budget and manage its liquidity in light of the failure to obtain additional financing, including the ability of the Company to complete the payments pursuant to the terms of the option agreement to acquire 100% of the Ranger-Page Project; inflation; changes in exchange rates; fluctuations in commodity prices; delays in the development of projects; capital, operating and reclamation costs varying significantly from estimates and the other risks involved in the mineral exploration and development industry; and those risks set out in the Company’s public documents filed on SEDAR. Although the Company believes that the assumptions and factors used in preparing the forward-looking information in this presentation are reasonable, undue reliance should not be placed on such information, which only applies as of the date of this presentation, and no assurance can be given that such events will occur in the disclosed time frames or at all. The Company disclaims any intention or obligation to update or revise any forward-looking information, whether as a result of new information, future events or otherwise, other than as required by law. No stock exchange, securities commission or other regulatory authority has approved or disapproved of the information contained herein.


Qualified Person

Timothy Mosey, B.Sc., M.Sc., SME is a Qualified Person as defined by NI 43-101 and has reviewed and approved the technical data and information contained in this presentation.


SIGNIFICANTLY INCREASING THE POTENTIAL MINERAL ENDOWMENT OF THE PROJECT

New Drill Target Areas - 2023

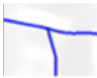
LEGEND




Stops




Underground Workings



1. Osburn	5. Buckeye
2. Crown Point	6. Spring
3. Curlew	7. Government Gulch
4. 96 Fault	8. Page



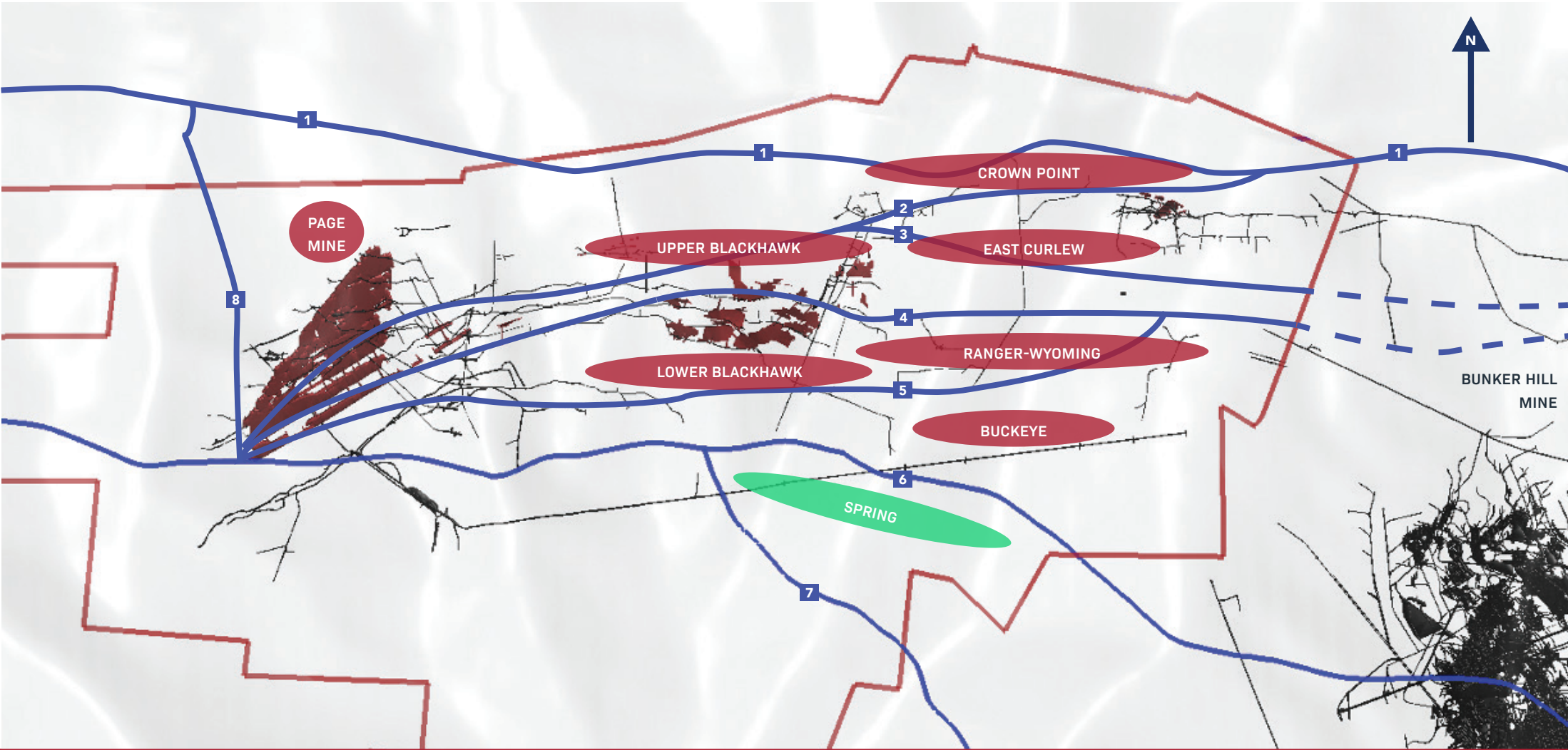
Property Boundary



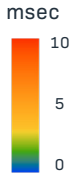
Bunker Hill Mine



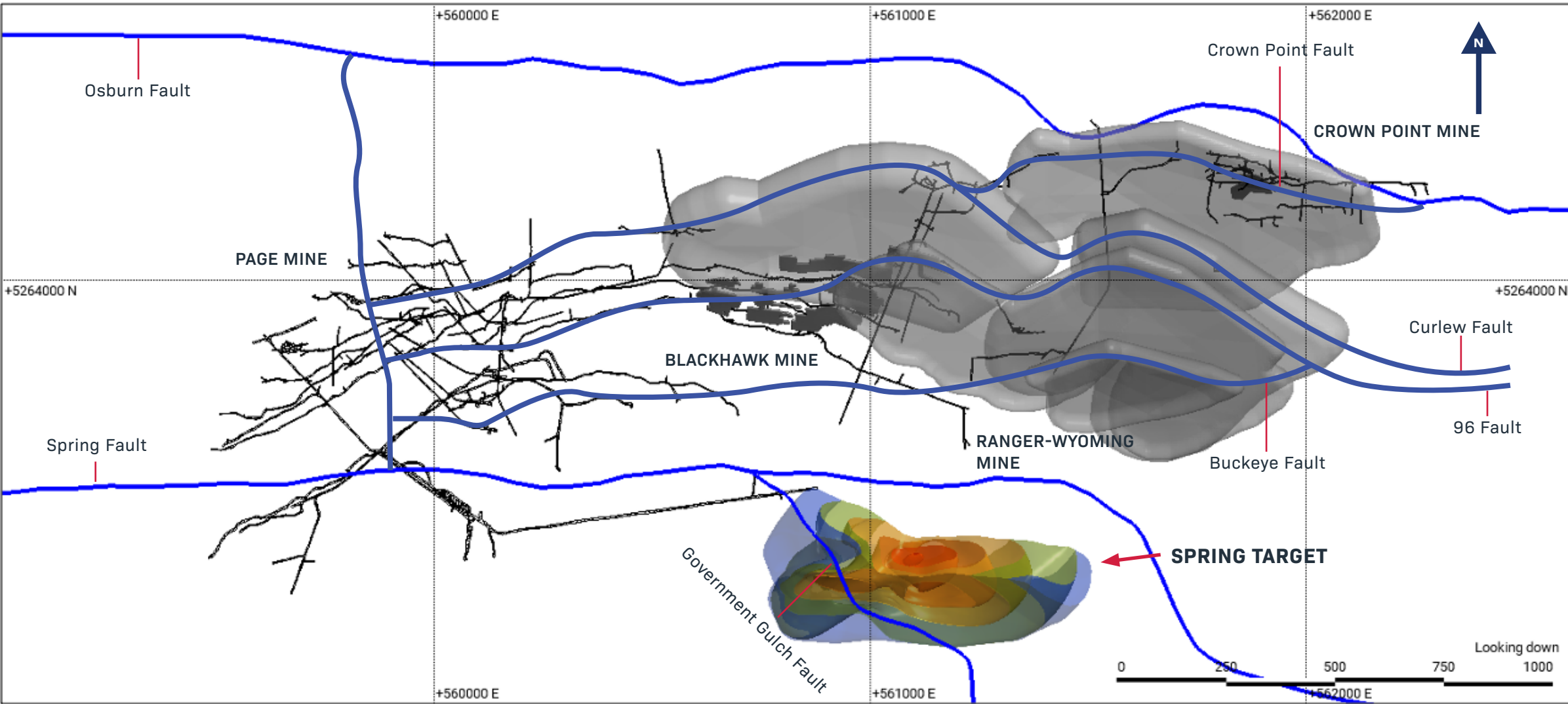
Plan View



Spring Target Area



Plan View
Looking Down

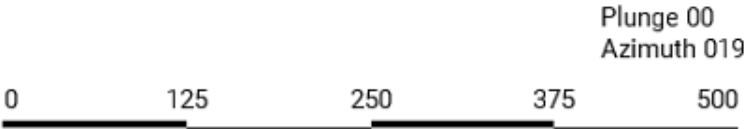
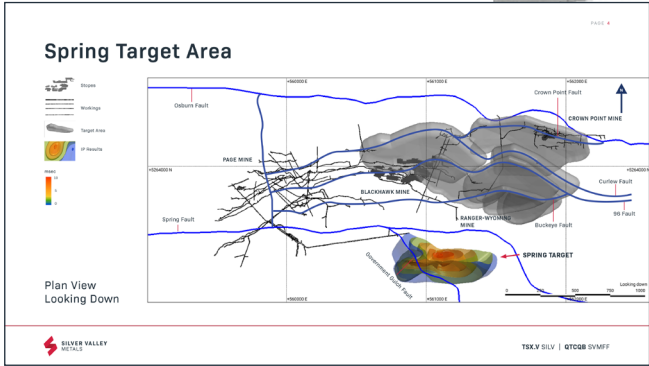
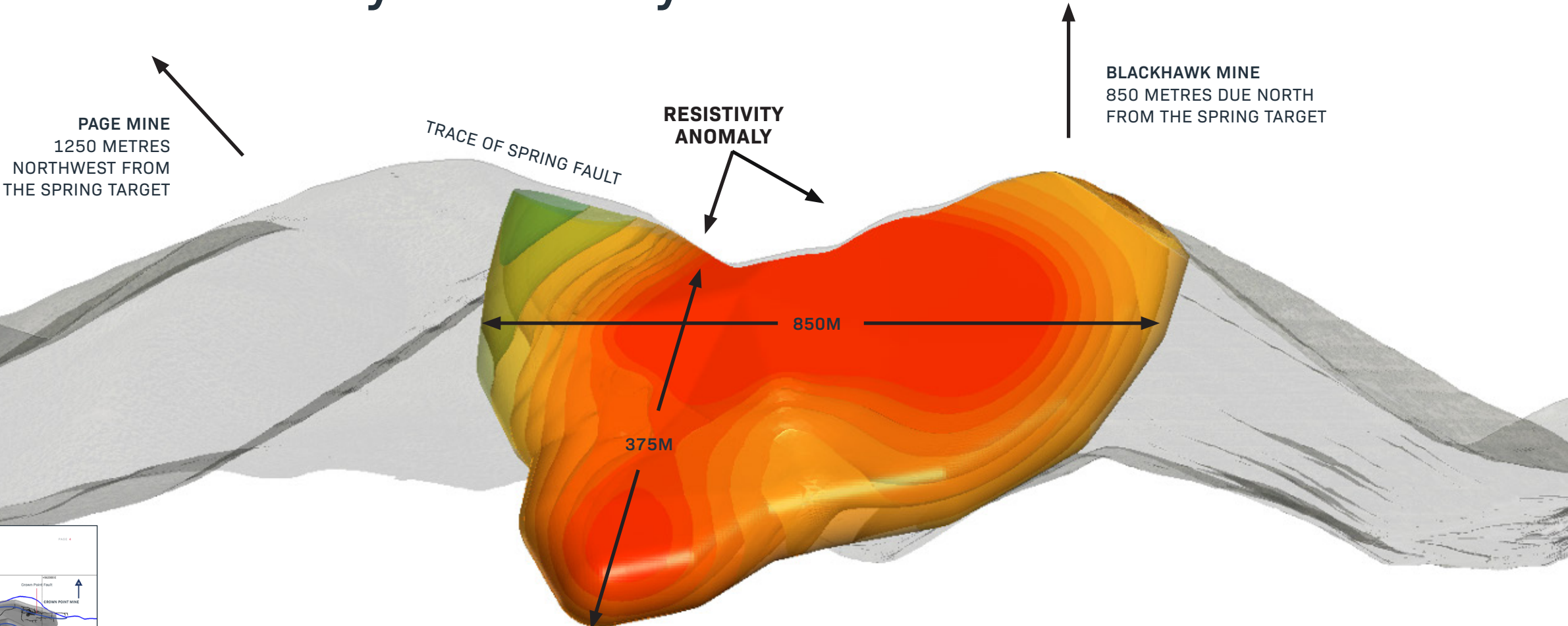
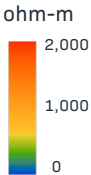


STRONGLY SILICIFIED, STRONG INDICATOR OF VEIN MINERALIZATION

Geophysics: Resistivity Anomaly



Resistivity Results

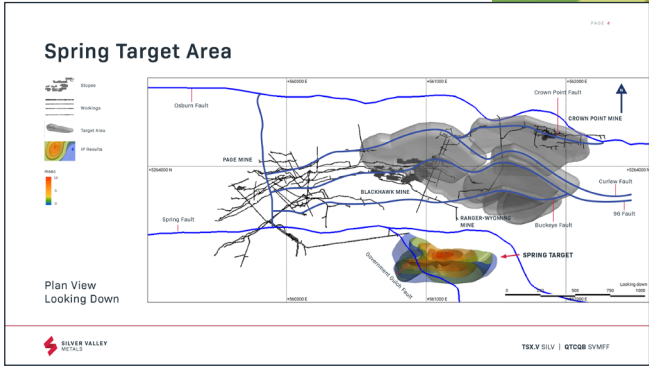
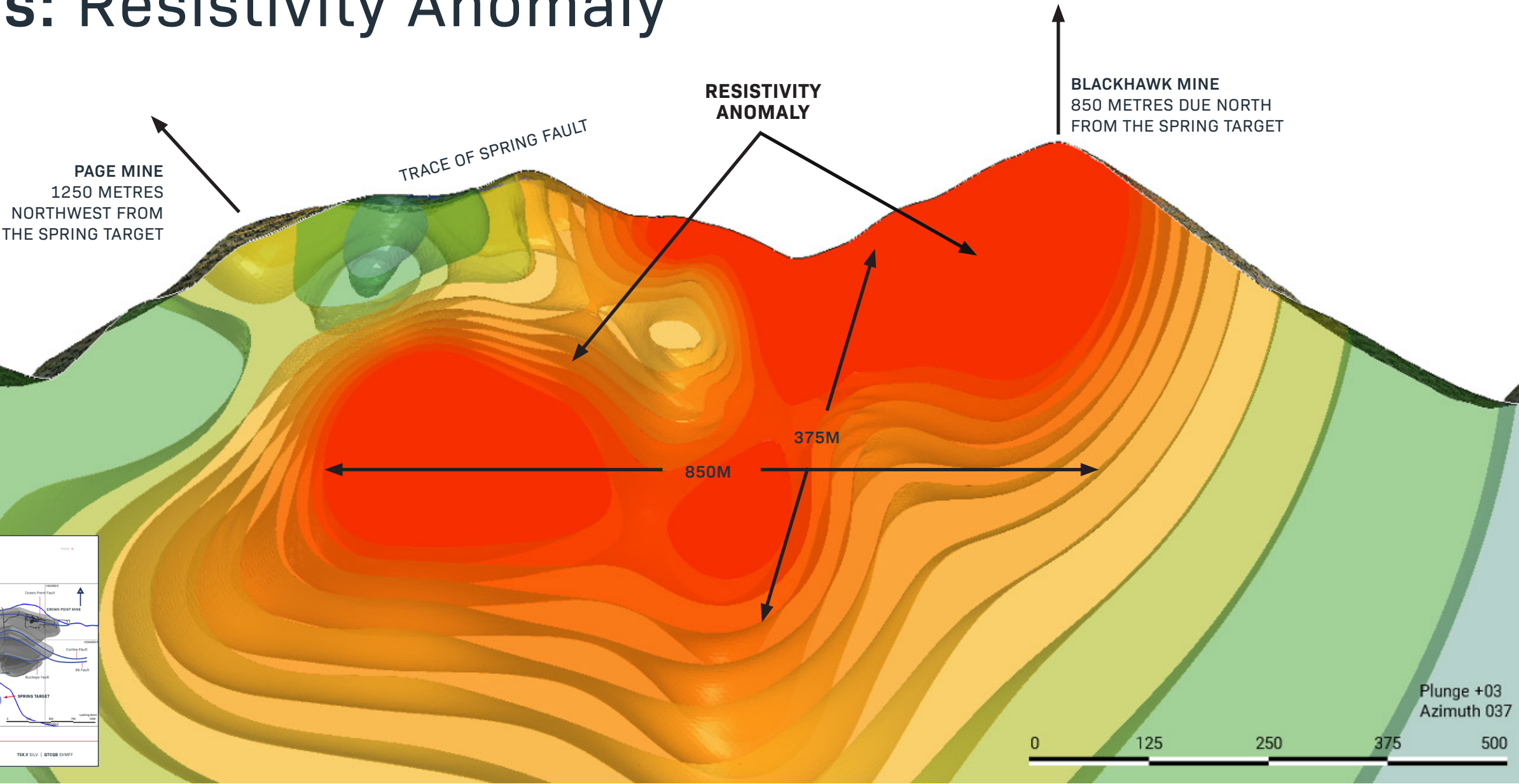
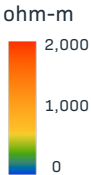


STRONGLY SILICIFIED, STRONG INDICATOR OF VEIN MINERALIZATION

Geophysics: Resistivity Anomaly

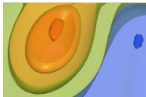


Resistivity Results



SIGNIFICANT AT SURFACE ANOMALY STRONGLY COINCIDENT WITH RESISTIVITY

Geophysics: Induced Polarization Anomaly



IP Results

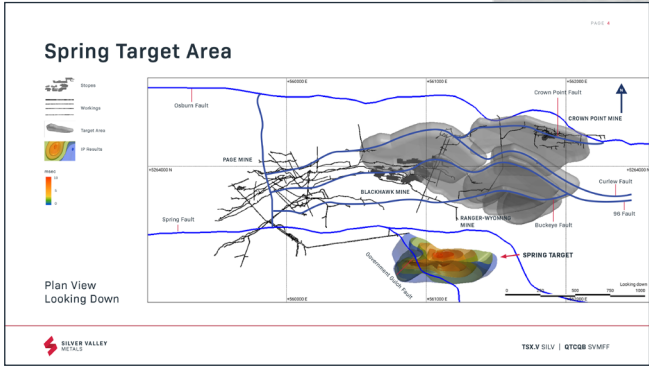


PAGE MINE
1250 METRES
NORTHWEST FROM
THE SPRING TARGET

TRACE OF SPRING FAULT

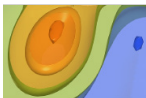
INDUCED
POLARIZATION
ANOMALY

BLACKHAWK MINE
850 METRES DUE NORTH
FROM THE SPRING TARGET



SIGNIFICANT AT SURFACE ANOMALY STRONGLY COINCIDENT WITH RESISTIVITY

Geophysics: Induced Polarization Anomaly



IP Results



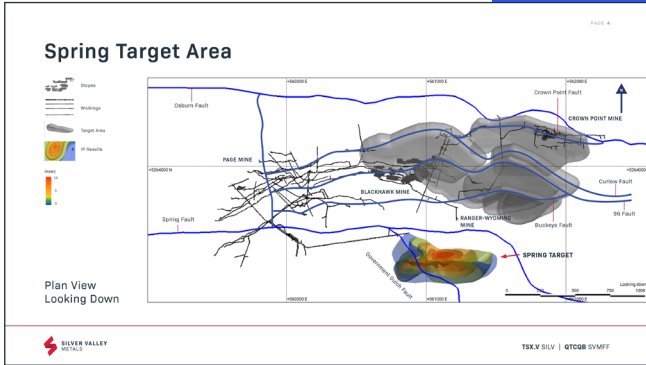
PAGE MINE
1250 METRES
NORTHWEST FROM
THE SPRING TARGET

TRACE OF SPRING FAULT

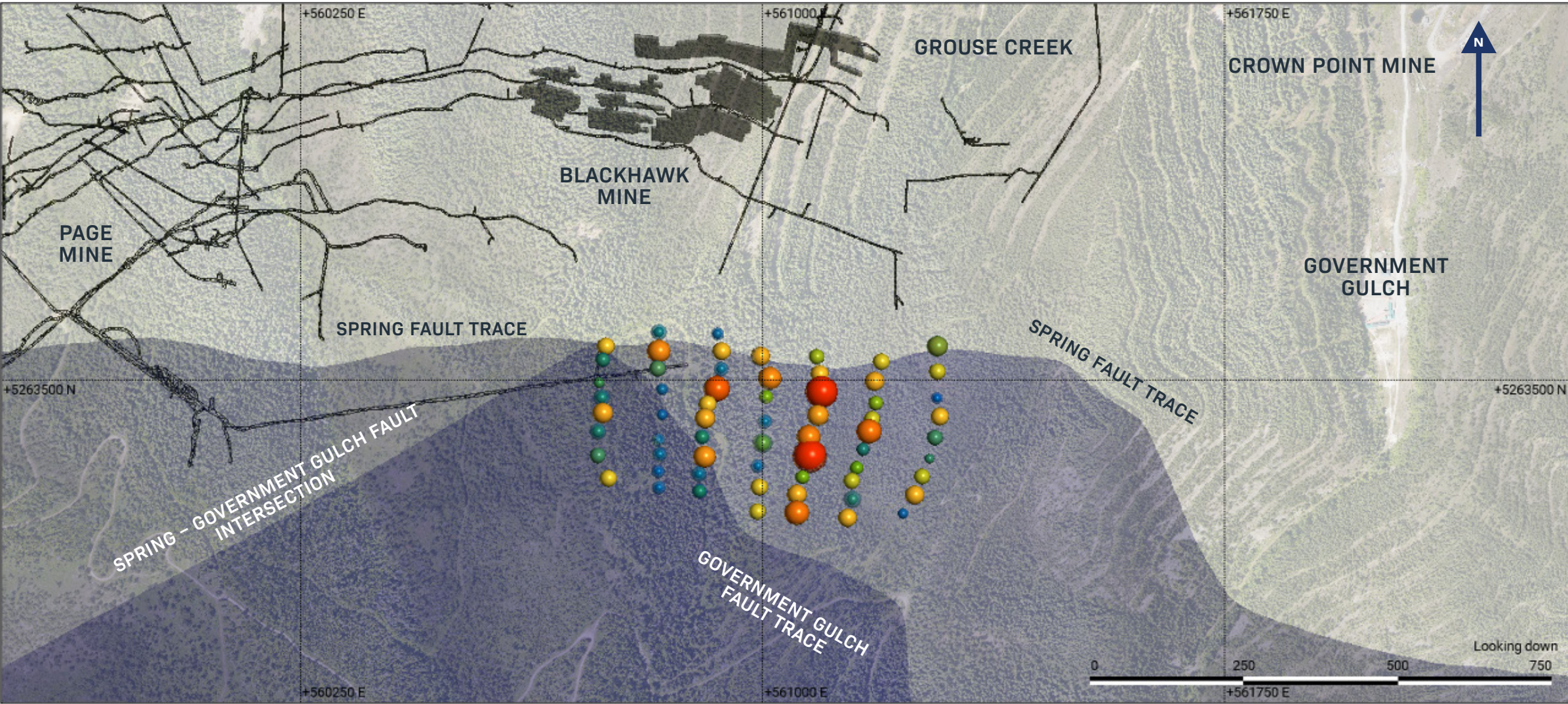
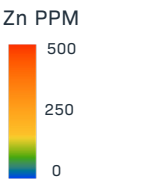
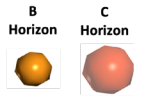
INDUCED
POLARIZATION
ANOMALY

BLACKHAWK MINE
850 METRES DUE NORTH
FROM THE SPRING TARGET

300M
400M

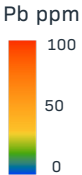
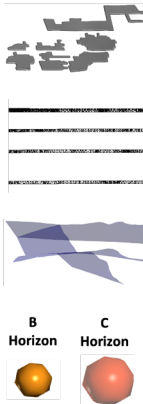


Geochemical Survey: Zinc

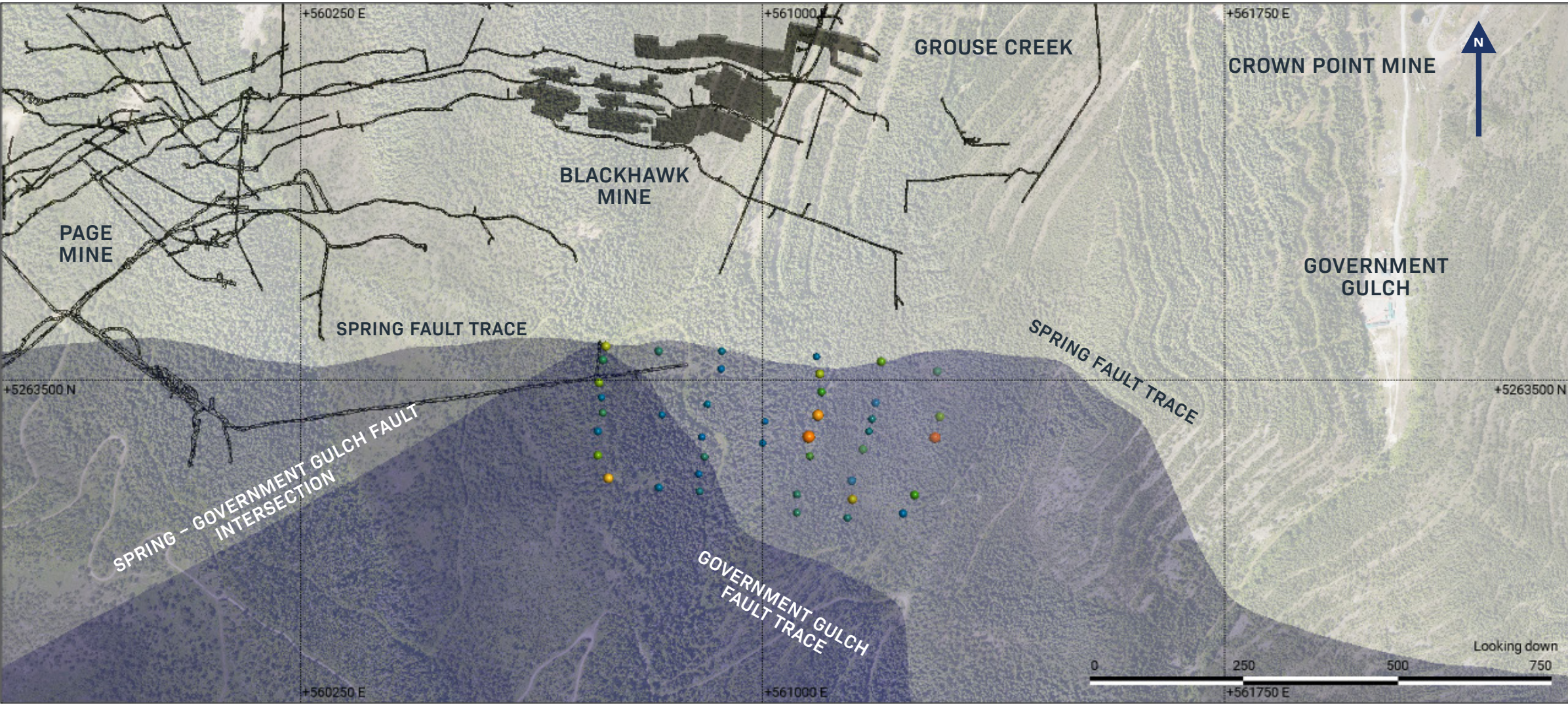


Plan View
Looking Down

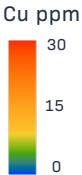
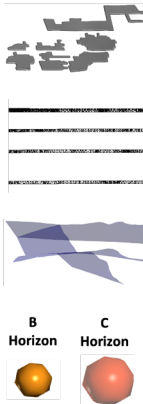
Geochemical Survey: Lead



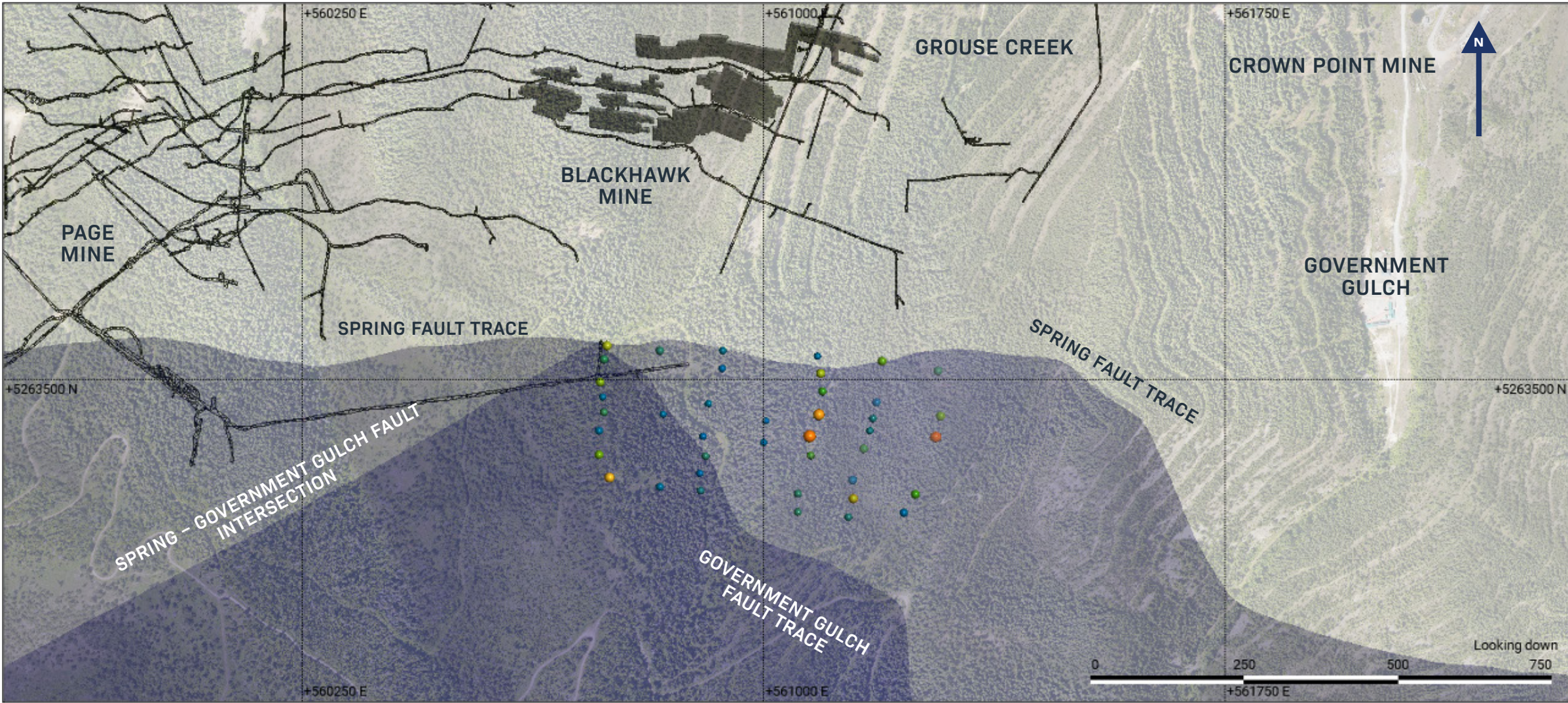
Plan View
Looking Down



Geochemical Survey: Copper

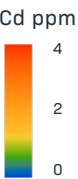


Plan View
Looking Down

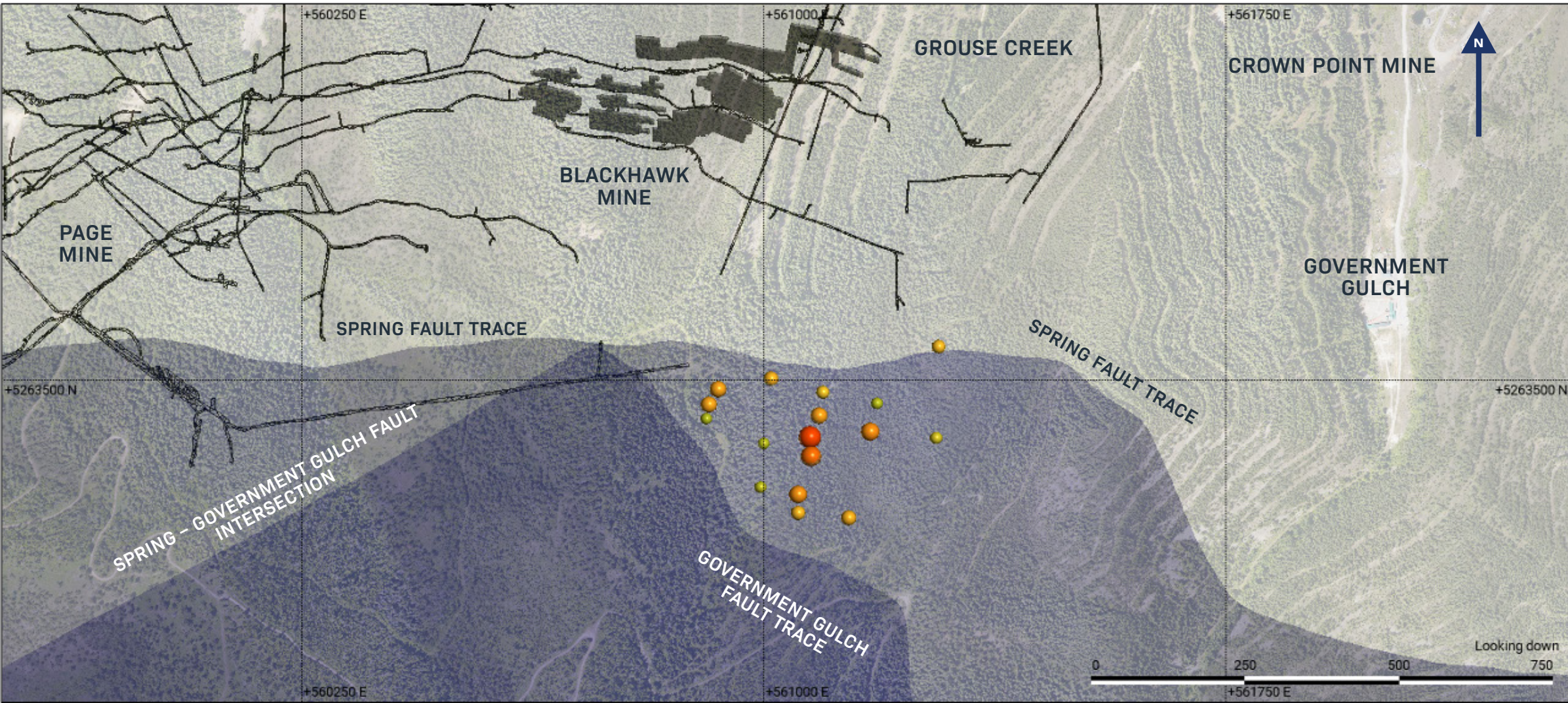


Geochemical Survey: Cadmium

- A strong indicator of sphalerite / zinc

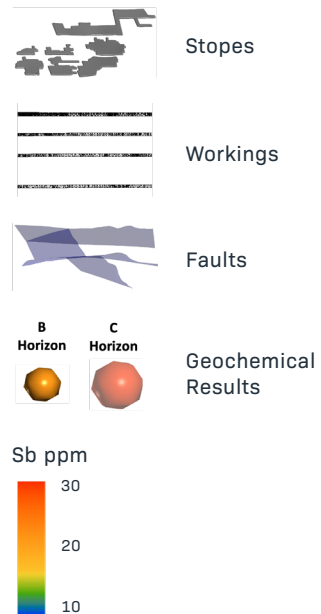


Plan View
Looking Down

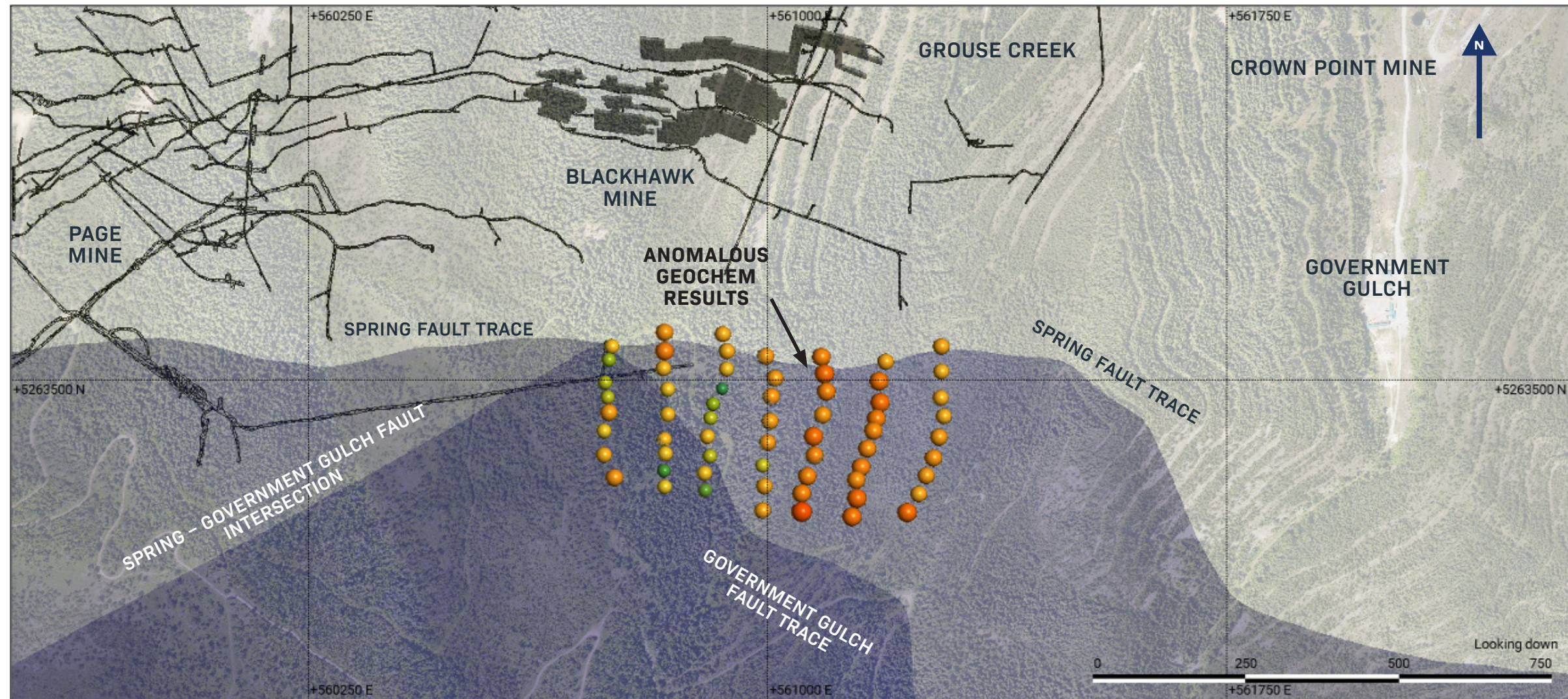


Geochemical Survey: Antimony

- A strong indicator of boulangerite, a lead sulphide, present in veins located in our area of the district
- An indicator of tetrahedrite, a rich silver bearing mineral in the district

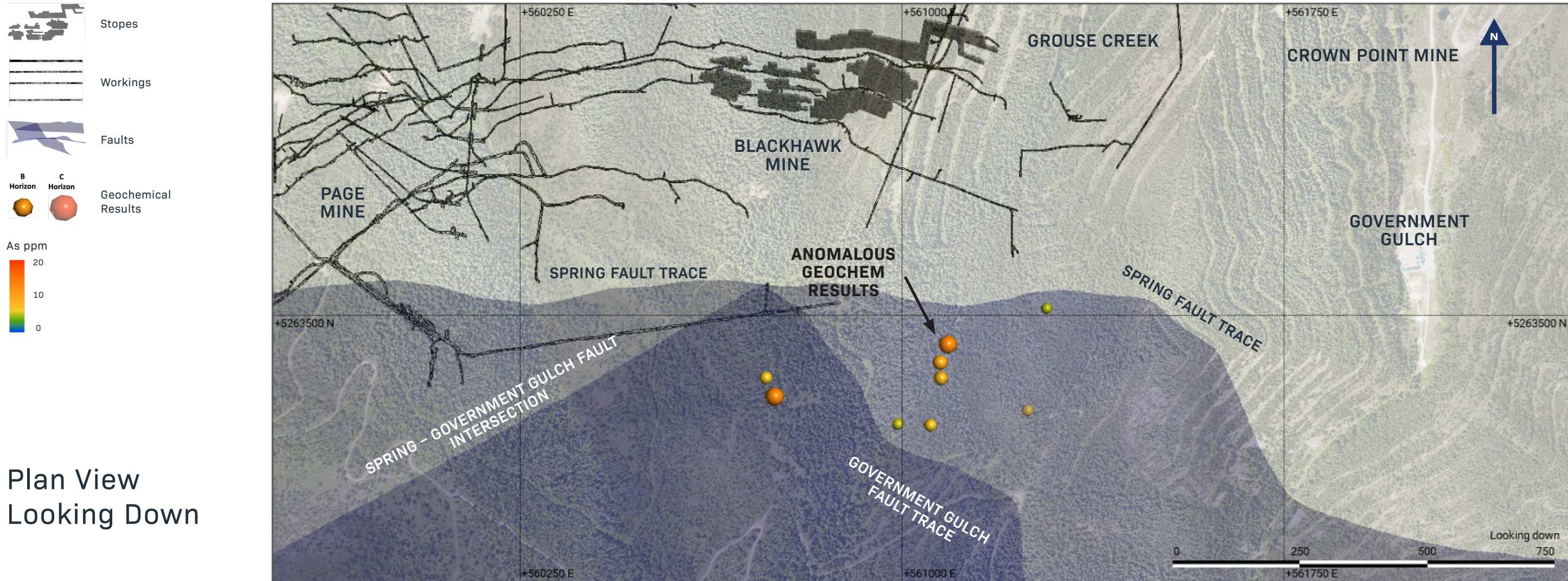


Plan View
Looking Down



Geochemical Survey: Arsenic

- A strong indicator of arsenopyrite, a gangue mineral common in veins located in our area of the district
- An indicator of tetrahedrite, a rich silver bearing mineral in the district



CONTACT US



**SILVER VALLEY
METALS**

BRANDON ROOK

PRESIDENT & CEO

E: info@silvervalleymetals.com

M: 604-800-4710

HEAD OFFICE

750 - 1095 WEST PENDER STREET
VANCOUVER, B.C. V6E 2M6