



# SILVER VALLEY METALS

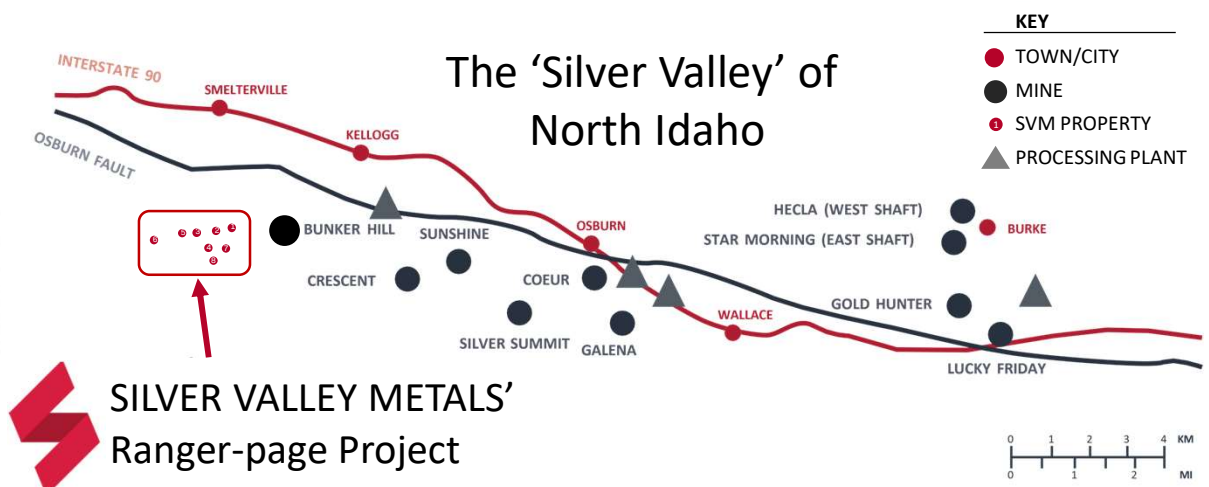
TSXV: SILV, OTCQB: SVMFF  
www.silvervalleymetals.com

# Ranger-Page Project

- Seeking large silver, zinc, and lead deposits through Brownfield Exploration in Idaho's Silver Valley.
- Delivering modern technology for the first time to the consolidated west-end of the Silver Valley mining district.

## Silver, Lead, Zinc potential - Silver Valley, north Idaho

- 10 Major mines along narrow 35km corridor

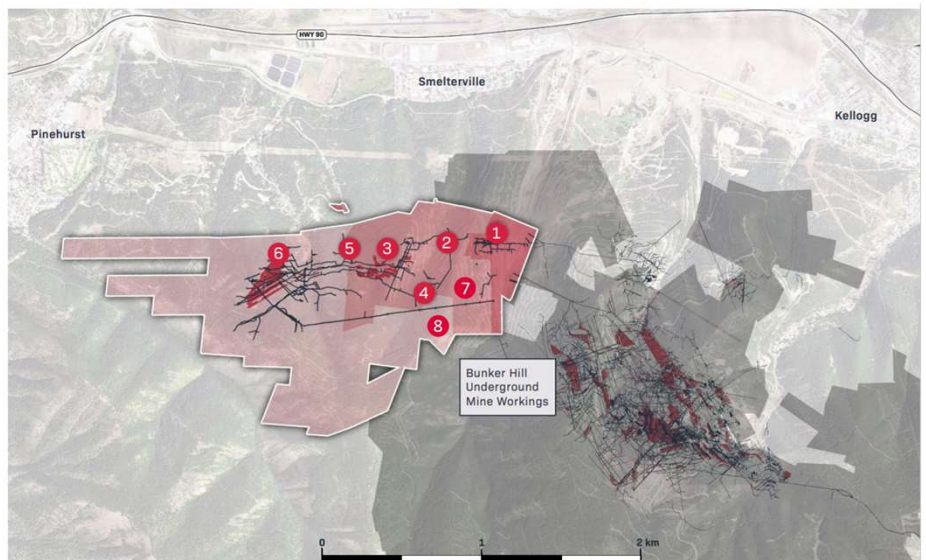


## Patented Claims and Targets

- Patented Lode Claims – no Federal permitting requirements
- 8 Targets – 6 historic mines
- Deep underground mining potential
- Three mines with high-grade past production
- Top-10 historical producer in District
- 1<sup>st</sup> time area consolidated by one company
- 1<sup>st</sup> time modern exploration applied to project

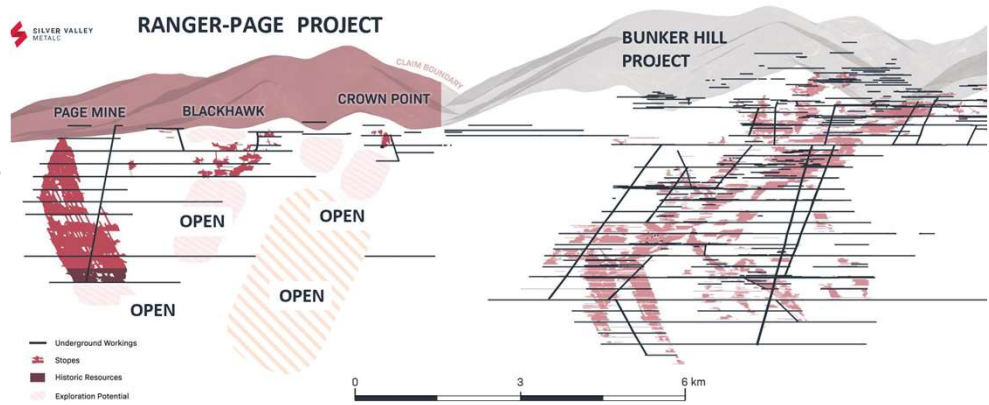
### TARGETS

- 1 Crown Point
- 2 Ranger
- 3 Blackhawk
- 4 Wyoming
- 5 Curlew
- 6 Page
- 7 Buckeye
- 8 Spring



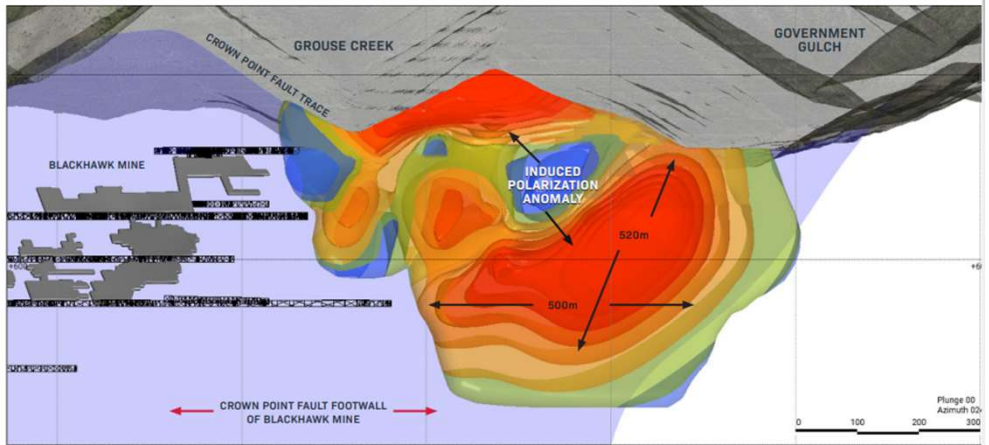
## Exploration Potential:

- Significant potential for new discoveries and extensions of mineralization up-plunge from historic mines as well as down-dip where these mines continue to remain in high grade mineralization.
- 4 of 6 historic mines mined to less than 200 feet below surface.
- Strong potential to discover new targets outside the areas of historic mines with modern exploration applied for the first time.



## Exploration Results: Crown Point

- Numerous Induced Polarization and resistivity anomalies were identified in the 2022 exploration campaign.
- All targets reflect strong coincident surface geochemistry and significant structure controls.
- Crown Point (pictured) is 1 of 8 targets located within a relatively small area measuring 3km's x 2km's
- Drill ready for 2023



### Qualified Person

Timothy Mosey, B.Sc., M.Sc., SME is a Qualified Person as defined by NI 43-101 and has reviewed and approved the technical data and information contained in this presentation.

### SHARE CAPITALIZATION

Common Shares:	48.7M
Options:	4.8M
Warrants (11/24 @ \$0.15)	13.7M
Warrants (3/23 @ \$0.30)	2.8M
<b>Total Shares (FD)</b>	<b>69.9M</b>

### CORPORATE HQ

Silver Valley Metals Corp.  
750-1095 West Pender Street  
Vancouver, B.C. V6E 2M6  
Phone: (604) 800-4710  
Email: [info@silvervalleymetals.com](mailto:info@silvervalleymetals.com)

### STOCK INFO

<u>Symbols</u>	
TSXV:	SILV
OTCQB:	SVMFF
Recent Price:	C\$0.11
Average Daily Volume (combined):	58,715
Market Cap (simple):	C\$5.36M
Market Cap (FD):	C\$7.69M
52-week High:	C\$0.33
52-week Low:	C\$0.07

Note: all data as of 5/4/23.